

CX800

**EXCAVATOR
TIER III CERTIFIED**

ENGINE

Model	6WG1X, Tier III certified
Type	4-stroke, turbocharged
Cylinders	6
Bore/Stroke	5.79 in x 6.07 in (147 x 154 mm)
Displacement	958 in ³ (15 700 cc)
Fuel injection	Direct
Fuel	Diesel
Fuel filter	In-line strainer
Cooling	Liquid
Horsepower per SAE J1349	
Net	495 hp (369 kW) @ 1800 rpm
Maximum torque @ 1500 rpm	
Net	1659 lb-ft (2250 N-m)

BOOM/ARM

Boom (Reach)

Length	27 ft 7 in (8.4 m)
Boom w/arm cylinder & plumbing	17,725 lb (8040 kg)
Hoist cylinders (2)	1,764 lb (800 kg) each
Total weight	21,253 lb (9640 kg)

18 ft 5 in Arm (5.62 m)

Bare arm	7,147 lb (3242 kg)
Bucket cylinder linkage & plumbing	3,126 lb (1418 kg)
Total weight	10,273 lb (4660 kg)

14 ft 7 in Arm (4.44 m)

Bare arm	6,019 lb (2730 kg)
Bucket cylinder linkage & plumbing	3,126 lb (1418 kg)
Total weight	9,145 lb (4148 kg)

12 ft 0 in Arm (3.66 m)

Bare arm	5,251 lb (2382 kg)
Bucket cylinder linkage & plumbing	3,126 lb (1418 kg)
Total weight	8,378 lb (3800 kg)

Boom (Mass Excavation)

Length	23 ft 9 in (7.25 m)
Boom w/arm cylinder & plumbing	16,491 lb (7480 kg)
Hoist cylinders (2)	1,764 lb (800 kg) each
Total weight	20,018 lb (9080 kg)

9 ft 9 in Arm (2.98 m) (Mass Excavation)

Bare arm	5,254 lb (2383 kg)
Bucket cylinder linkage & plumbing	3,545 lb (1608 kg)
Total weight	8,799 lb (3991 kg)

UNDERCARRIAGE

Number of rollers	
Top, each track	3
Bottom, each track	9
Number of shoes	
Double grouser – each side	51
Link pitch	10.3 in (260.35 mm)

HYDRAULICS

Pumps (2)	Variable displacement axial piston design
Capacity –	
Maximum	2 x 132.1 gpm (500 L/min)
System relief pressure –	
Standard	4554 psi (31.4 MPa)
Power Boost	4974 psi (34.3 MPa)

Control valves –
4-spool section for left track travel, boom, bucket, arm
5-spool section for right track travel, boom, auxiliary, swing and arm
Boom and arm anti-drift valves

Pilot control hydraulic system –	
Pump (1)	Gear design
Maximum capacity	7.1 gpm (27 L/min)
Relief pressure	638 psi (4.4 MPa)

Swing –	
Motor (1)	Fixed displacement axial piston design
Speed	0-7.6 rpm
Brake	Spring-applied hydraulically released with dual cushion relief
Tail swing radius	14 ft 1 in (4.30 m)

Travel –	
Motor (2)	Two-speed axial piston design
Final drive	Planetary gear reduction
Drawbar pull	12,229 lb (544 kN)

Travel Speeds –	
Auto shift high to low	Forward/Reverse
Low	1.8 mph (2.9 km/h)
High	2.7 mph (4.3 km/h)

Travel control valve –	Dual stage relief and counter-balance design
------------------------	---

HYDRAULIC CYLINDERS

Boom cylinders (2) –	
Bore diameter	7.9 in (200 mm)
Rod diameter	5.5 in (140 mm)
Stroke	74.5 in (1893 mm)
Arm cylinder (1) –	
Bore diameter	8.5 in (215 mm)
Rod diameter	5.9 in (150 mm)
Stroke	90.2 in (2290 mm)
Bucket cylinder (1) –	
Bore diameter	7.5 in (190 mm)
Rod diameter	5.1 in (130 mm)
Stroke	61.2 in (1555 mm)
Arm cylinder (1) – (mass excavation)	
Bore diameter	8.5 in (215 mm)
Rod diameter	5.9 in (150 mm)
Stroke	85.6 in (2175 mm)
Bucket cylinder (1) – (mass excavation)	
Bore diameter	8.5 in (215 mm)
Rod diameter	5.9 in (150 mm)
Stroke	59.8 in (1520 mm)

ELECTRICAL

Voltage	24 volts, negative ground
Alternator	50 amp
Batteries (2)	Low-maintenance 140 Ah (5 hr rate)

SERVICE CAPACITIES

Hydraulic tank	
Refill capacity	82 gal (310 L)
Total system	190 gal (720 L)
Final drive (per side)	14.3 qt (13.5 L)
Swing drive	14.3 qt (13.5 L)
Engine	
w/filter change	49.7 qt (47 L)
Fuel	238 gal (900 L)
Radiator	105.7 qt (100 L)

OPERATING WEIGHT

With 12 ft 0 in (3.66 m) arm, 27 ft 7 in boom, 29.5 in (750 mm) track shoes, 6,614 lb (3000 kg) bucket, 175 lb (79 kg) operator, full fuel and standard equipment 175,210 lb (79 474 kg)

LIFT CAPACITIES – BOOM LENGTH 27 FT 7 IN (8.40 M)

18.5 ft (5.62 m) Arm Lift capacities calculated using a 5,709 lb (2590 kg) bucket, 27,668 lb (12,561 kg) counterweight operating in "Light" Mode.

Load (Lift Point) Height	10 ft (3.05 m)		15 ft (4.57 m)		20 ft (6.10 m)		25 ft (7.62 m)		30 ft (9.14 m)		35 ft (10.67 m)		40 ft (12.19 m)		45 ft (13.72 m)		MAXIMUM REACH			
	END	SIDE	END	SIDE	END	SIDE	END	SIDE	END	SIDE	END	SIDE	END	SIDE	END	SIDE	@	END	SIDE	
+40 ft (12.19 m)																	41 ft 9 in (12.73 m)	8,000 lb* (3629 kg)*	8,000 lb* (3629 kg)*	
+35 ft (10.67 m)																	45 ft 3 in (13.79 m)	7,300 lb* (3311 kg)*	7,300 lb* (3311 kg)*	
+30 ft (9.14 m)													15,500 lb* (7031 kg)*	15,500 lb* (7031 kg)*			47 ft 10 in (14.58 m)	6,900 lb* (3130 kg)*	6,900 lb* (3130 kg)*	
+25 ft (7.62 m)													18,250 lb* (8278 kg)*	18,250 lb* (8278 kg)*	9,300 lb* (4218 kg)*	9,300 lb* (4218 kg)*	49 ft 8 in (15.14 m)	6,750 lb* (3062 kg)*	6,750 lb* (3062 kg)*	
+20 ft (6.10 m)												22,300 lb* (10115 kg)*	22,300 lb* (10115 kg)*	20,700 lb* (9389 kg)*	20,400 lb* (9253 kg)*	15,100 lb* (6849 kg)*	15,100 lb* (6849 kg)*	50 ft 11 in (15.52 m)	6,700 lb* (3039 kg)*	6,700 lb* (3039 kg)*
+15 ft (4.57 m)									26,850 lb* (12179 kg)*	26,850 lb* (12179 kg)*	24,200 lb* (10977 kg)*	24,200 lb* (10977 kg)*	22,350 lb* (10138 kg)*	19,800 lb* (8981 kg)*	18,100 lb* (8210 kg)*	15,250 lb* (6917 kg)*	51 ft 6 in (15.70 m)	6,850 lb* (3107 kg)*	6,850 lb* (3107 kg)*	
+10 ft (3.05 m)			32,750 lb* (14855 kg)*	32,750 lb* (14855 kg)*	40,400 lb* (18325 kg)*	40,400 lb* (18325 kg)*	36,000 lb* (16329 kg)*	36,000 lb* (16329 kg)*	30,100 lb* (13653 kg)*	30,100 lb* (13653 kg)*	26,300 lb* (11929 kg)*	26,300 lb* (11929 kg)*	23,650 lb* (10727 kg)*	18,900 lb* (8573 kg)*	20,450 lb* (9276 kg)*	14,700 lb* (6668 kg)*	51 ft 7 in (15.72 m)	7,100 lb* (3221 kg)*	7,100 lb* (3221 kg)*	
+5 ft (1.52 m)			69,400 lb* (31479 kg)*	69,400 lb* (31479 kg)*	52,850 lb* (23972 kg)*	52,850 lb* (23972 kg)*	41,850 lb* (18983 kg)*	40,600 lb* (18416 kg)*	33,550 lb* (15218 kg)*	30,250 lb* (13721 kg)*	28,300 lb* (12837 kg)*	23,150 lb* (10501 kg)*	24,900 lb* (11294 kg)*	18,000 lb* (8165 kg)*	22,100 lb* (10024 kg)*	14,150 lb* (6418 kg)*	51 ft 1 in (15.57 m)	7,550 lb* (3425 kg)*	7,550 lb* (3425 kg)*	
Ground-line			48,300 lb* (21909 kg)*	48,300 lb* (21909 kg)*	61,500 lb* (27896 kg)*	53,850 lb* (24426 kg)*	46,200 lb* (20956 kg)*	38,050 lb* (17259 kg)*	36,550 lb* (16579 kg)*	28,450 lb* (12905 kg)*	30,350 lb* (13767 kg)*	21,950 lb* (9966 kg)*	26,000 lb* (11793 kg)*	17,200 lb* (7802 kg)*	22,800 lb* (10342 kg)*	13,600 lb* (6169 kg)*	50 ft 0 in (15.24 m)	8,200 lb* (3719 kg)*	8,200 lb* (3719 kg)*	
-5 ft (-1.52 m)	30,450 lb* (13812 kg)*	30,450 lb* (13812 kg)*	48,850 lb* (22158 kg)*	48,850 lb* (22158 kg)*	63,700 lb* (28894 kg)*	51,200 lb* (23224 kg)*	48,500 lb* (21999 kg)*	36,150 lb* (16397 kg)*	38,500 lb* (17463 kg)*	27,100 lb* (12292 kg)*	31,700 lb* (14379 kg)*	20,950 lb* (9503 kg)*	26,850 lb* (12179 kg)*	16,550 lb* (7507 kg)*	22,850 lb* (10365 kg)*	13,250 lb* (6010 kg)*	48 ft 4 in (14.73 m)	9,150 lb* (4150 kg)*	9,150 lb* (4150 kg)*	
-10 ft (-3.05 m)	37,600 lb* (17055 kg)*	37,600 lb* (17055 kg)*	55,950 lb* (25378 kg)*	55,950 lb* (25378 kg)*	63,500 lb* (28803 kg)*	50,200 lb* (22770 kg)*	48,850 lb* (22158 kg)*	35,050 lb* (15898 kg)*	39,100 lb* (17735 kg)*	26,200 lb* (11894 kg)*	32,100 lb* (14560 kg)*	20,350 lb* (9231 kg)*	26,850 lb* (12179 kg)*	16,150 lb* (7326 kg)*	18,150 lb* (8233 kg)*	13,100 lb* (5942 kg)*	45 ft 11 in (14.00 m)	10,500 lb* (4763 kg)*	10,500 lb* (4763 kg)*	
-15 ft (-4.57 m)	46,250 lb* (20979 kg)*	46,250 lb* (20979 kg)*	64,950 lb* (29461 kg)*	64,950 lb* (29461 kg)*	61,700 lb* (27987 kg)*	50,250 lb* (22793 kg)*	47,900 lb* (21727 kg)*	34,750 lb* (15782 kg)*	38,400 lb* (17418 kg)*	25,900 lb* (11748 kg)*	31,400 lb* (14243 kg)*	20,100 lb* (9117 kg)*	25,650 lb* (11635 kg)*	16,050 lb* (7280 kg)*			42 ft 8 in (13.00 m)	12,450 lb* (5647 kg)*	12,450 lb* (5647 kg)*	
-20 ft (-6.10 m)	56,750 lb* (25741 kg)*	56,750 lb* (25741 kg)*	77,000 lb* (34927 kg)*	77,000 lb* (34927 kg)*	57,800 lb* (26218 kg)*	50,900 lb* (23088 kg)*	45,200 lb* (20502 kg)*	35,050 lb* (15898 kg)*	36,150 lb* (16397 kg)*	26,050 lb* (11816 kg)*	28,950 lb* (13131 kg)*	20,300 lb* (9208 kg)*	20,350 lb* (9231 kg)*	16,500 lb* (7484 kg)*			38 ft 4 in (11.68 m)	15,600 lb* (7076 kg)*	15,600 lb* (7076 kg)*	
-25 ft (-7.62 m)	78,150 lb* (35448 kg)*	78,150 lb* (35448 kg)*	66,650 lb* (30232 kg)*	66,650 lb* (30232 kg)*	50,750 lb* (23020 kg)*	50,300 lb* (22816 kg)*	39,700 lb* (18008 kg)*	35,900 lb* (16294 kg)*	31,150 lb* (14129 kg)*	26,750 lb* (12134 kg)*	22,900 lb* (10387 kg)*	21,100 lb* (9571 kg)*								
-30 ft (-9.14 m)			50,650 lb* (22974 kg)*	50,650 lb* (22974 kg)*	38,900 lb* (17645 kg)*	38,900 lb* (17645 kg)*	29,550 lb* (13404 kg)*	29,550 lb* (13404 kg)*	19,800 lb* (8981 kg)*	19,800 lb* (8981 kg)*										

14 ft 7 in (4.44 m) Arm Lift capacities calculated using a 6,616 lb (3001 kg) bucket, 27,668 lb (12,561 kg) counterweight operating in "Light" Mode.

Load (Lift Point) Height	10 ft (3.05 m)		15 ft (4.57 m)		20 ft (6.10 m)		25 ft (7.62 m)		30 ft (9.14 m)		35 ft (10.67 m)		40 ft (12.19 m)		45 ft (13.72 m)		MAXIMUM REACH			
	END	SIDE	END	SIDE	END	SIDE	END	SIDE	END	SIDE	END	SIDE	END	SIDE	END	SIDE	@	END	SIDE	
+40 ft (12.19 m)																	36 ft 9 in (11.20 m)	8,887 lb* (4031 kg)*	8,887 lb* (4031 kg)*	
+35 ft (10.67 m)																	40 in 8 in (12.40 m)	8,037 lb* (3645 kg)*	8,037 lb* (3645 kg)*	
+30 ft (9.14 m)												19,837 lb* (8998 kg)*	19,837 lb* (8998 kg)*				43 ft 7 in (13.28 m)	7,587 lb* (3441 kg)*	7,587 lb* (3441 kg)*	
+25 ft (7.62 m)												23,787 lb* (10790 kg)*	23,787 lb* (10790 kg)*	14,637 lb* (6639 kg)*	14,637 lb* (6639 kg)*		45 ft 8 in (13.92 m)	7,387 lb* (3351 kg)*	7,387 lb* (3351 kg)*	
+20 ft (6.10 m)												27,587 lb* (12513 kg)*	27,587 lb* (12513 kg)*	25,237 lb* (11447 kg)*	24,916 lb* (11302 kg)*	21,287 lb* (9656 kg)*	19,466 lb* (8830 kg)*	47 ft 0 in (14.33 m)	7,337 lb* (3328 kg)*	7,337 lb* (3328 kg)*
+15 ft (4.57 m)							35,487 lb* (16097 kg)*	35,487 lb* (16097 kg)*	30,287 lb* (13738 kg)*	30,287 lb* (13738 kg)*	26,887 lb* (12196 kg)*	24,616 lb* (11166 kg)*	24,037 lb* (10903 kg)*	18,866 lb* (8558 kg)*			47 ft 8 in (14.53 m)	7,487 lb* (3396 kg)*	7,487 lb* (3396 kg)*	
+10 ft (3.05 m)			72,187 lb* (32743 kg)*	72,187 lb* (32743 kg)*	53,687 lb* (24352 kg)*	53,687 lb* (24352 kg)*	40,887 lb* (18546 kg)*	40,887 lb* (18546 kg)*	33,137 lb* (15031 kg)*	30,716 lb* (13933 kg)*	28,687 lb* (13012 kg)*	23,416 lb* (10621 kg)*	25,587 lb* (11606 kg)*	18,116 lb* (8217 kg)*	11,187 lb* (5074 kg)*	11,187 lb* (5074 kg)*	47 ft 9 in (14.55 m)	7,837 lb* (3555 kg)*	7,837 lb* (3555 kg)*	
+5 ft (1.52 m)			44,987 lb* (20406 kg)*	44,987 lb* (20406 kg)*	59,987 lb* (27210 kg)*	54,916 lb* (24910 kg)*	45,737 lb* (20746 kg)*	38,866 lb* (17629 kg)*	36,237 lb* (16437 kg)*	29,016 lb* (13162 kg)*	30,287 lb* (13738 kg)*	22,266 lb* (10100 kg)*	26,437 lb* (11992 kg)*	17,416 lb* (7900 kg)*	12,737 lb* (5777 kg)*	12,737 lb* (5777 kg)*	47 ft 2 in (14.38 m)	8,387 lb* (3804 kg)*	8,387 lb* (3804 kg)*	
Ground-line	23,187 lb* (10517 kg)*	23,187 lb* (10517 kg)*	43,787 lb* (19861 kg)*	43,787 lb* (19861 kg)*	63,337 lb* (28729 kg)*	51,916 lb* (23549 kg)*	48,587 lb* (22039 kg)*	36,766 lb* (16677 kg)*	38,437 lb* (17435 kg)*	27,566 lb* (12504 kg)*	31,737 lb* (14396 kg)*	21,316 lb* (9669 kg)*	27,037 lb* (12264 kg)*	16,766 lb* (7605 kg)*			46 ft 0 in (14.02 m)	9,187 lb* (4167 kg)*	9,187 lb* (4167 kg)*	
-5 ft (-1.52 m)	34,837 lb* (15802 kg)*	34,837 lb* (15802 kg)*	51,287 lb* (23263 kg)*	51,287 lb* (23263 kg)*	63,987 lb* (29024 kg)*	50,616 lb* (22959 kg)*	49,237 lb* (22333 kg)*	35,466 lb* (16087 kg)*	39,337 lb* (17843 kg)*	26,616 lb* (12073 kg)*	32,366 lb* (14681 kg)*	20,616 lb* (9351 kg)*	27,137 lb* (12309 kg)*	16,366 lb* (7424 kg)*			44 ft 2 in (13.46 m)	10,387 lb* (4711 kg)*	10,387 lb* (4711 kg)*	
-10 ft (-3.05 m)	42,487 lb* (19272 kg)*	42,487 lb* (19272 kg)*	59,887 lb* (27164 kg)*	59,887 lb* (27164 kg)*	62,537 lb* (28366 kg)*	50,566 lb* (22936 kg)*	48,537 lb* (22016 kg)*	35,066 lb* (15906 kg)*	38,937 lb* (17661 kg)*	26,116 lb* (11846 kg)*	31,887 lb* (14464 kg)*	20,316 lb* (9215 kg)*	26,037 lb* (11810 kg)*	16,266 lb* (7378 kg)*			41 ft 6 in (12.65 m)	12,087 lb* (5483 kg)*	12,087 lb* (5483 kg)*	
-15 ft (-4.57 m)	53,187 lb* (24125 kg)*	53,187 lb* (24125 kg)*	76,437 lb* (34671 kg)*	76,437 lb* (34671 kg)*	59,087 lb* (26801 kg)*	51,116 lb* (23186 kg)*	46,337 lb* (21018 kg)*	36,216 lb* (15974 kg)*	37,137 lb* (16845 kg)*	26,166 lb* (11869 kg)*	29,837 lb* (13534 kg)*	20,416 lb* (9261 kg)*					37 ft 9 in (11.51 m)	14,737 lb* (6685 kg)*	14,737 lb* (6685 kg)*	
-20 ft (-6.10 m)	70,137 lb* (31814 kg)*	70,137 lb* (31814 kg)*	68,687 lb* (31156 kg)*	68,687 lb* (31156 kg)*	52,837 lb* (23966 kg)*	51,066 lb* (23163 kg)*	41,637 lb* (18886 kg)*	35,916 lb* (16291 kg)*	32,837 lb* (14895 kg)*	26,716 lb* (12118 kg)*	24,237 lb* (10994 kg)*	21,116 lb* (9578 kg)*								
-25 ft (-7.62 m)			54,337 lb* (24647 kg)*	54,337 lb* (24647 kg)*	42,387 lb* (19226 kg)*	42,387 lb* (19226 kg)*	32,787 lb* (14872 kg)*	32,787 lb* (14872 kg)*	22,937 lb* (10404 kg)*	22,937 lb* (10404 kg)*										

*Lift capacities do not exceed 75% of the minimum tipping load or 87% of the hydraulic lift capacity. Capacities that are marked with an asterisk are hydraulic limited.

12 ft 0 in (3.66 m) Arm Lift capacities calculated using a 6,616 lb (3001 kg) bucket, 27,668 lb (12,561 kg) counterweight operating in "Light" Mode.

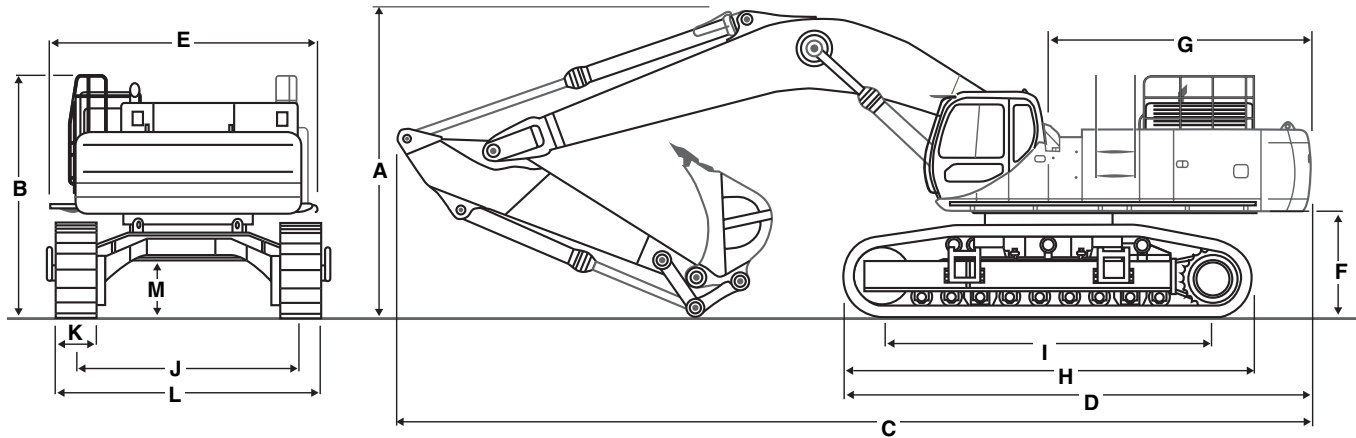
Load (Lift Point) Height	10 ft (3.05 m)		15 ft (4.57 m)		20 ft (6.10 m)		25 ft (7.62 m)		30 ft (9.14 m)		35 ft (10.67 m)		40 ft (12.19 m)		45 ft (13.72 m)		MAXIMUM REACH			
	END	SIDE	END	SIDE	END	SIDE	END	SIDE	END	SIDE	END	SIDE	END	SIDE	END	SIDE	@	END	SIDE	
+35 ft (10.67 m)																		37 ft 5 in (11.40 m)	13,698 lb* (6213 kg)*	13,698 lb* (6213 kg)*
+30 ft (9.14 m)																		40 ft 7 in (12.37 m)	13,148 lb* (5964 kg)*	13,148 lb* (5964 kg)*
+25 ft (7.62 m)									28,248 lb* (12 813 kg)*	28,248 lb* (12 813 kg)*	26,048 lb* (11 815 kg)*	25,749 lb* (11 679 kg)*					42 ft 10 in (13.06 m)	12,948 lb* (5873 kg)*	12,948 lb* (5873 kg)*	
+20 ft (6.10 m)									30,248 lb* (13 720 kg)*	30,248 lb* (13 720 kg)*	27,548 lb* (12 496 kg)*	25,299 lb* (11 475 kg)*	17,798 lb* (8073 kg)*	17,798 lb* (8073 kg)*			44 ft 3 in (13.49 m)	13,048 lb* (5919 kg)*	13,048 lb* (5919 kg)*	
+15 ft (4.57 m)			66,048 lb* (29 959 kg)*	66,048 lb* (29 959 kg)*	48,648 lb* (22 066 kg)*	48,648 lb* (22 066 kg)*	38,698 lb* (17 553 kg)*	38,698 lb* (17 553 kg)*	32,748 lb* (14 854 kg)*	31,898 lb* (14 469 kg)*	28,948 lb* (13 131 kg)*	24,249 lb* (10 999 kg)*	25,698 lb* (11 657 kg)*	18,649 lb* (8459 kg)*			45 ft (13.72 m)	13,348 lb* (6055 kg)*	13,348 lb* (6055 kg)*	
+10 ft (3.05 m)					55,448 lb* (25 151 kg)*	55,448 lb* (25 151 kg)*	43,998 lb* (19 957 kg)*	40,549 lb* (18 392 kg)*	35,298 lb* (16 011 kg)*	30,199 lb* (13 698 kg)*	30,448 lb* (13 811 kg)*	23,149 lb* (10 500 kg)*	26,748 lb* (12 133 kg)*	18,049 lb* (8187 kg)*			45 ft (13.72 m)	13,948 lb* (6327 kg)*	13,948 lb* (6327 kg)*	
+5 ft (1.52 m)			37,498 lb* (17 009 kg)*	37,498 lb* (17 009 kg)*	60,998 lb* (27 668 kg)*	53,299 lb* (24 176 kg)*	47,948 lb* (21 749 kg)*	38,049 lb* (17 259 kg)*	37,898 lb* (17 190 kg)*	38,049 lb* (17 259 kg)*	37,898 lb* (17 190 kg)*	28,599 lb* (12 972 kg)*	14,378 lb* (6519 kg)*	10,046 kg)*	27,448 lb* (12 450 kg)*	17,449 lb* (7915 kg)*		44 ft 6 in (13.56 m)	14,848 lb* (6735 kg)*	14,149 lb* (6418 kg)*
Ground-line			44,048 lb* (19 980 kg)*	44,048 lb* (19 980 kg)*	63,898 lb* (28 984 kg)*	51,049 lb* (23 155 kg)*	49,548 lb* (22 475 kg)*	36,299 lb* (16 465 kg)*	39,448 lb* (17 893 kg)*	27,399 lb* (12 428 kg)*	32,648 lb* (14 809 kg)*	21,349 lb* (9684 kg)*	27,698 lb* (12 564 kg)*	16,949 lb* (7688 kg)*			43 ft 3 in (13.18 m)	16,148 lb* (7325 kg)*	14,799 lb* (6712 kg)*	
-5 ft (-1.52 m)	42,648 lb* (19 345 kg)*	42,648 lb* (19 345 kg)*	52,598 lb* (23 858 kg)*	56,198 lb* (25 491 kg)*	63,598 lb* (28 848 kg)*	50,599 lb* (22 951 kg)*	49,348 lb* (22 384 kg)*	35,399 lb* (16 056 kg)*	39,648 lb* (17 984 kg)*	26,649 lb* (12 088 kg)*	32,698 lb* (14 832 kg)*	20,799 lb* (9434 kg)*	27,098 lb* (12 292 kg)*	16,699 lb* (7574 kg)*			41 ft 2 in (12.55 m)	18,048 lb* (8187 kg)*	16,149 lb* (7325 kg)*	
-10 ft (-3.05 m)	48,948 lb* (22 203 kg)*	48,948 lb* (22 203 kg)*	69,198 lb* (31 388 kg)*	69,198 lb* (31 388 kg)*	61,148 lb* (27 736 kg)*	50,899 lb* (23 087 kg)*	48,048 lb* (21 794 kg)*	35,349 lb* (16 034 kg)*	38,698 lb* (17 553 kg)*	26,399 lb* (11 974 kg)*	31,498 lb* (14 287 kg)*	20,699 lb* (9389 kg)*					38 ft 3 in (11.66 m)	20,898 lb* (9479 kg)*	18,599 lb* (8436 kg)*	
-15 ft (-4.57 m)	64,798 lb* (29 392 kg)*	64,798 lb* (29 392 kg)*	72,748 lb* (32 998 kg)*	72,748 lb* (32 998 kg)*	56,398 lb* (25 582 kg)*	51,548 lb* (23 382 kg)*	44,698 lb* (20 275 kg)*	35,799 lb* (16 238 kg)*	35,798 lb* (16 238 kg)*	26,699 lb* (12 110 kg)*	27,798 lb* (12 609 kg)*	21,099 lb* (9570 kg)*								
-20 ft (-6.10 m)	80,048 lb* (36 309 kg)*	80,048 lb* (36 309 kg)*	80,048 lb* (36 309 kg)*	61,248 lb* (27 782 kg)*	61,248 lb* (27 782 kg)*	48,298 lb* (21 908 kg)*	38,248 lb* (17 349 kg)*	36,399 lb* (16 510 kg)*	29,248 lb* (13 267 kg)*	27,499 lb* (12 473 kg)*										
-25 ft (-7.62 m)					34,848 lb* (15 807 kg)*	34,848 lb* (15 807 kg)*	25,448 lb* (11 543 kg)*	25,448 lb* (11 543 kg)*												

LIFT CAPACITIES – BOOM LENGTH 23 FT 9 IN (7.25 M) (MASS EXCAVATION)

9 ft 9 in (2.98 m) Arm Lift capacities calculated using a 7,623 lb (3450 kg) bucket, 27,668 lb (12,561 kg) counterweight operating in "Light" Mode.

Load (Lift Point) Height	10 ft (3.05 m)		15 ft (4.57 m)		20 ft (6.10 m)		25 ft (7.62 m)		30 ft (9.14 m)		35 ft (10.67 m)		40 ft (12.19 m)		45 ft (13.72 m)		MAXIMUM REACH			
	END	SIDE	END	SIDE	END	SIDE	END	SIDE	END	SIDE	END	SIDE	END	SIDE	END	SIDE	@	END	SIDE	
+30 ft (9.14 m)																		26 ft 4 in (8.03 m)	26,500 lb* (12 020 kg)*	26,500 lb* (12 020 kg)*
+25 ft (7.62 m)																		29 ft 8 in (9.04 m)	26,200 lb* (11 884 kg)*	26,200 lb* (11 884 kg)*
+20 ft (6.10 m)							38,750 lb* (17 577 kg)*	38,750 lb* (17 577 kg)*	34,900 lb* (15 830 kg)*	30,400 lb* (13 789 kg)*							31 ft 11 in (9.73 m)	26,900 lb* (12 202 kg)*	26,900 lb* (12 202 kg)*	
+15 ft (4.57 m)			71,000 lb* (32 205 kg)*	71,000 lb* (32 205 kg)*	52,050 lb* (23 609 kg)*	52,050 lb* (23 609 kg)*	42,400 lb* (19 232 kg)*	40,000 lb* (18 144 kg)*	36,750 lb* (16 670 kg)*	29,150 lb* (13 222 kg)*							33 ft 3 in (10.13 m)	28,500 lb* (12 927 kg)*	24,100 lb* (10 932 kg)*	
+10 ft (3.05 m)			84,550 lb* (38 351 kg)*	84,550 lb* (38 351 kg)*	56,950 lb* (25 832 kg)*	53,500 lb* (24 267 kg)*	46,200 lb* (20 956 kg)*	37,500 lb* (17 010 kg)*	38,700 lb* (17 554 kg)*	27,750 lb* (12 587 kg)*							33 ft 9 in (10.29 m)	31,200 lb* (14 152 kg)*	22,550 lb* (10 229 kg)*	
+5 ft (1.52 m)			68,450 lb* (31 048 kg)*	68,450 lb* (31 048 kg)*	63,600 lb* (28 848 kg)*	50,150 lb* (22 748 kg)*	49,100 lb* (22 271 kg)*	35,450 lb* (16 080 kg)*	40,250 lb* (18 257 kg)*	26,550 lb* (12 043 kg)*							33 ft 6 in (10.21 m)	35,450 lb* (16 080 kg)*	22,100 lb* (10 024 kg)*	
Ground-line			77,700 lb* (35 244 kg)*	77,700 lb* (35 244 kg)*	64,950 lb* (29 461 kg)*	48,250 lb* (21 886 kg)*	50,250 lb* (22 793 kg)*	34,100 lb* (15 468 kg)*	40,600 lb* (18 416 kg)*	25,700 lb* (11 657 kg)*							32 ft 6 in (9.91 m)	36,750 lb* (16 670 kg)*	22,650 lb* (10 274 kg)*	
-5 ft (-1.52 m)	59,100 lb* (26 807 kg)*	59,100 lb* (26 807 kg)*	83,300 lb* (37 784 kg)*	78,050 lb* (35 403 kg)*	62,950 lb* (28 554 kg)*	47,600 lb* (21 591 kg)*	49,050 lb* (22 249 kg)*	33,500 lb* (15 195 kg)*	38,950 lb* (17 667 kg)*	25,400 lb* (11 521 kg)*							30 ft 8 in (9.35 m)	37,600 lb* (17 055 kg)*	24,600 lb* (11 158 kg)*	
-10 ft (-3.05 m)	84,400 lb* (38 283 kg)*	84,400 lb* (38 283 kg)*	73,900 lb* (33 520 kg)*	73,900 lb* (33 520 kg)*	57,200 lb* (25945 kg)*	47,950 lb* (21 750 kg)*	44,600 lb* (20 230 kg)*	33,750 lb* (15 309 kg)*									27 ft 9 in (8.46 m)	38,550 lb* (17 486 kg)*	28,900 lb* (13 109 kg)*	
-15 ft (-4.57 m)			58,960 lb* (26 744 kg)*	58,960 lb* (26 744 kg)*	46,200 lb* (20 956 kg)*	46,200 lb* (20 956 kg)*											23 ft 5 in (7.14 m)	38,050 lb* (17 259 kg)*	38,050 lb* (17 259 kg)*	

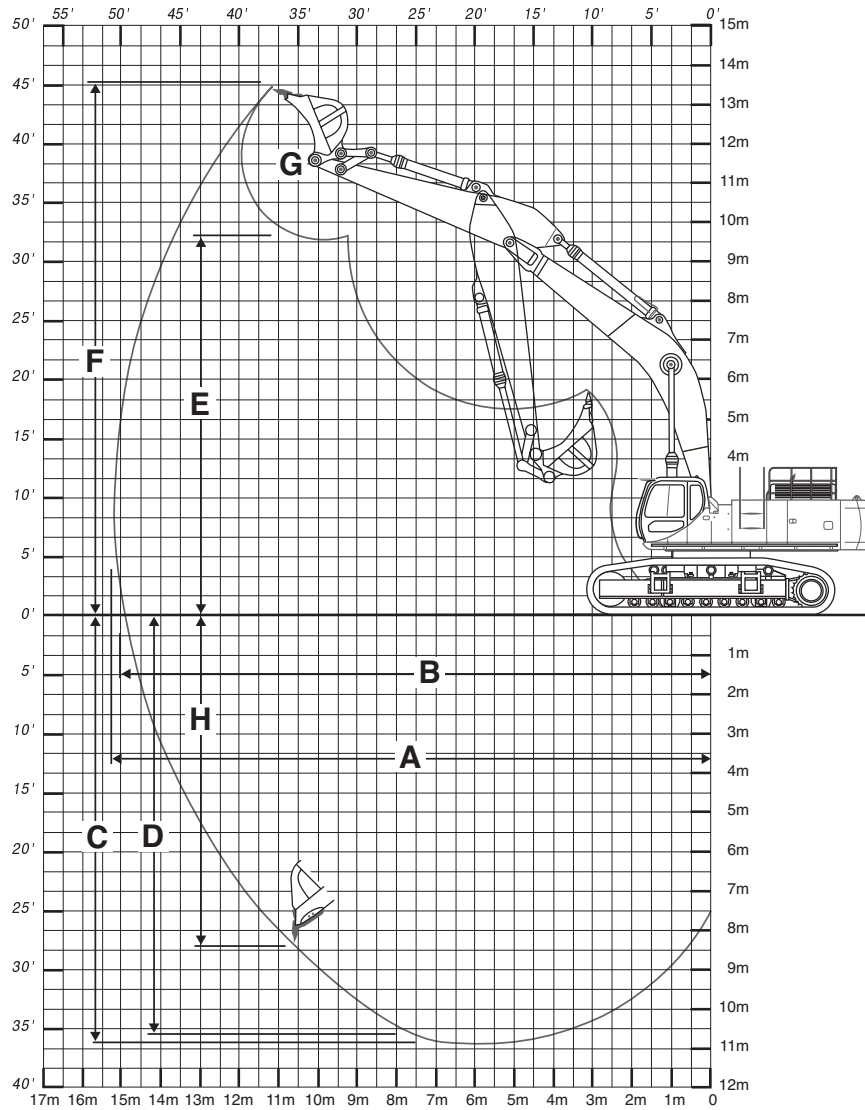
GENERAL DIMENSIONS



DIMENSIONS — BOOM LENGTH 27 FT 7 IN (8.40 M)

	18 ft 5 in (5.62 m) Arm	14 ft 7 in (4.44 m) Arm	12 ft 0 in (3.66 m) Arm
A. Overall height	20 ft 4 in (6.20 m)	16 ft 5 in (5.00 m)	15 ft 9 in (4.8 m)
B. Top hand rail height	12 ft 5 in (3.79 m)	12 ft 5 in (3.79 m)	12 ft 5 in (3.79 m)
C. Overall length	45 ft 8 in (13.92 m)	46 ft 11 in (14.32 m)	47 ft 1 in (14.36 m)
D. w/o attachment	24 ft 6 in (7.46 m)	24 ft 6 in (7.46 m)	24 ft 6 in (7.46 m)
E. Width of upperstructure	13 ft 11 in (4.25 m)	13 ft 11 in (4.25 m)	13 ft 11 in (4.25 m)
F. Upperstructure ground clearance	5 ft 3 in (1.59 m)	5 ft 3 in (1.59 m)	5 ft 3 in (1.59 m)
G. Tail swing radius	14 ft 1 in (4.30 m)	14 ft 1 in (4.30 m)	14 ft 1 in (4.30 m)
H. Track overall length	20 ft 10 in (6.36 m)	20 ft 10 in (6.36 m)	20 ft 10 in (6.36 m)
I. Center to center (idler to sprocket)	16 ft 8 in (5.07 m)	16 ft 8 in (5.07 m)	16 ft 8 in (5.07 m)
J. Track gauge — extended	11 ft 4 in (3.45 m)	11 ft 4 in (3.45 m)	11 ft 4 in (3.45 m)
K. Track shoe width	29.5 in (750 mm)	29.5 in (750 mm)	29.5 in (750 mm)
L. Track overall width w/29.5 in (750 mm) shoes	14 ft 4 in (4.36 m)	14 ft 4 in (4.36 m)	14 ft 4 in (4.36 m)
L. Track overall width w/29.5 in (750 mm) side frames retracted	12 ft 3 in (3.74 m)	12 ft 3 in (3.74 m)	12 ft 3 in (3.74 m)
M. Minimum ground clearance	2 ft 11 in (0.89 m)	2 ft 11 in (0.89 m)	2 ft 11 in (0.89 m)
Working weight*	177,106 lb (80 334 kg)	175,997 lb (79 822 kg)	175,210 lb (79 474 kg)
Ground pressure	13.8 psi (95 bar)	13.7 psi (94 bar)	13.7 psi (94 bar)

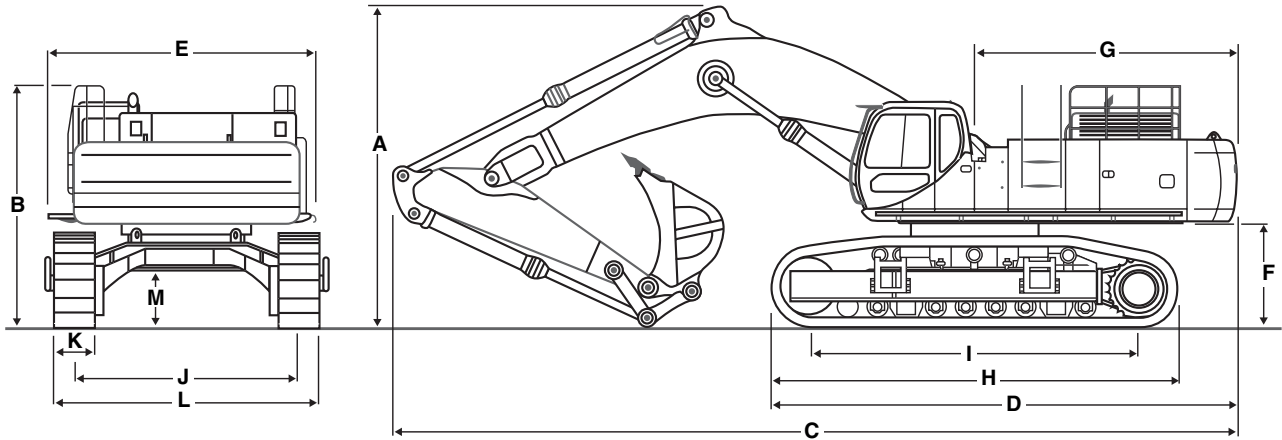
*With 29.5 in (750 mm) track shoe, 6,614 lb (3000 kg) bucket, 165 lb (75 kg) operator, full fuel and standard equipment.



PERFORMANCE SPECS – BOOM LENGTH 27 FT 7 IN (8.40 M)

	18 ft 5 in (5.62 m) Arm	14 ft 7 in (4.44 m) Arm	12 ft 0 in (3.66 m) Arm
A. Maximum dig radius	52 ft 10 in (16.11 m)	49 ft 0 in (14.94 m)	46 ft 4 in (14.12 m)
B. Dig radius at groundline	52 ft 1 in (15.86 m)	48 ft 2 in (14.68 m)	45 ft 5 in (13.84 m)
C. Maximum dig depth	35 ft 0 in (10.66 m)	31 ft 1 in (9.47 m)	28 ft 6 in (8.69 m)
D. Dig depth – 8 ft 0 in (2.44 m) level bottom	34 ft 8 in (10.56 m)	30 ft 9 in (9.36 m)	28 ft 1 in (8.57 m)
E. Dump height	33 ft 4 in (10.17 m)	31 ft 2 in (9.51 m)	29 ft 3 in (8.92 m)
F. Overall reach height	46 ft 11 in (14.30 m)	44 ft 7 in (13.6 m)	42 ft 4 in (12.91 m)
G. Bucket rotation	167°	167°	167°
H. Vertical straight wall dig depth	29 ft 11 in (9.11 m)	25 ft 5 in (7.75 m)	21 ft 3 in (6.44 m)
J. Minimum swing radius	20 ft 4 in (6.21 m)	20 ft 1 in (6.13 m)	20 ft 7 in (6.27 m)
Arm digging force			
Standard	43,842 lb (195 kN)	52,156 lb (232 kN)	61,598 lb (274 kN)
Power Boost	48,113 lb (214 kN)	56,877 lb (253 kN)	67,443 lb (300 kN)
Bucket digging force			
Standard	74,187 lb (330 kN)	74,187 lb (330 kN)	74,187 lb (330 kN)
Power Boost	81,156 lb (361 kN)	81,156 lb (361 kN)	81,156 lb (361 kN)

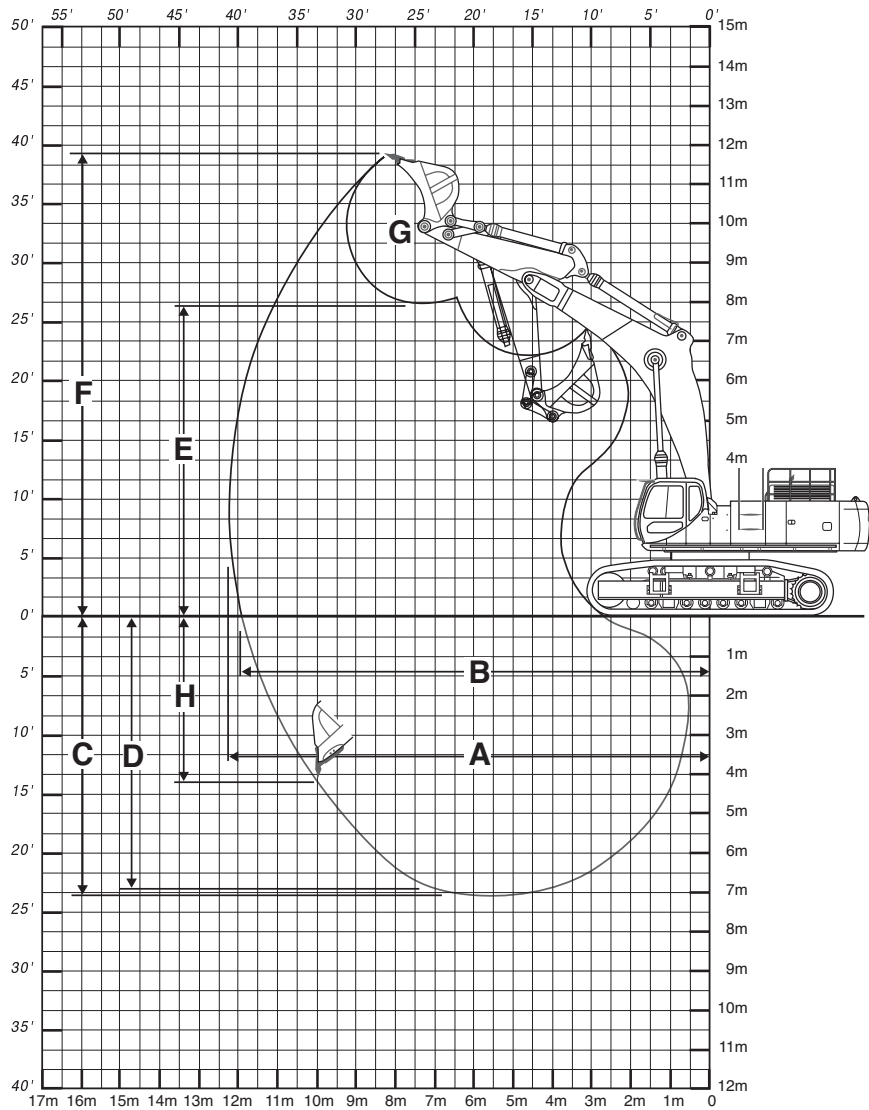
GENERAL DIMENSIONS



DIMENSIONS — BOOM LENGTH 23 FT 9 IN (7.25 M) (MASS EXCAVATION)

	9 ft 9 in (2.98 m) Arm
A. Overall height	16 ft 7 in (5.0 m)
B. Cab height	12 ft 5 in (3.79 m)
C. Overall length	43 ft 4 in (13.21 m)
D. w/o attachment	24 ft 6 in (7.46 m)
E. Width of upperstructure	13 ft 11 in (4.25 m)
F. Upperstructure ground clearance	5 ft 3 in (1.59 m)
G. Tail swing radius	14 ft 1 in (4.30 m)
H. Track overall length	20 ft 10 in (6.36 m)
I. Center to center (idler to sprocket)	16 ft 8 in (5.07 m)
J. Track gauge — extended	11 ft 4 in (3.45 m)
K. Track shoe width	29.5 in (750 mm)
L. Track overall width w/29.5 in (750 mm) shoes	14 ft 4 in (4.36 m)
L. Track overall width w/29.5 in (750 mm) side frames retracted	12 ft 3 in (3.74 m)
M. Minimum ground clearance	2 ft 11 in (0.89 m)
Working weight*	175,405 lb (79 562 kg)
Ground pressure	13.7 psi (94 bar)

*With 29.5 in (750 mm) track shoe, 7,623 lb (3450 kg) bucket, 165 lb (75 kg) operator, full fuel and standard equipment.



PERFORMANCE SPECS — BOOM LENGTH 23 FT 9 IN (7.25 M)

	9 ft 9 in (2.98 m) Arm
A. Maximum dig radius	40 ft 5 in (12.31 m)
B. Dig radius at groundline	39 ft 4 in (11.99 m)
C. Maximum dig depth	23 ft 1 in (7.03 m)
D. Dig depth – 8 ft 0 in (2.44 m) level bottom	22 ft 7 in (6.88 m)
E. Dump height	25 ft 11 in (7.89 m)
F. Overall reach height	38 ft 7 in (11.76 m)
G. Bucket rotation	167°
H. Vertical straight wall dig depth	13 ft 11 in (4.25 m)
J. Minimum swing radius	17 ft 8 in (5.39 m)
Arm digging force	
Standard	71,264 lb (317 kN)
Power Boost	78,009 lb (347 kN)
Bucket digging force	
Standard	96,668 lb (430 kN)
Power Boost	105,660 lb (470 kN)

STANDARD EQUIPMENT

OPERATOR'S COMPARTMENT

Cab with Isomount® system
Adjustable deluxe seat with
3 in (76 mm) retractable seat belt
Front window safety glass
Climate Control System
AM/FM Radio w/auto tuner
Roof hatch, skylight
Sliding Lexan® windows
Windshield wiper w/washer
Anti-theft device

ENGINE

6WG1X turbocharged diesel
Tier III certified
Warm up mode
Selectable one touch or auto
accelerator/decelerator
Auto engine derate

OPTIONAL EQUIPMENT

UPPERSTRUCTURE

Arm: 14 ft 7 in or 12 ft 0 in (4.44 m or 3.66 m)
Boom: 27 ft 7 in (8.4 m)

Mass Excavation

Arm: 9 ft 9 in (2.98 m)
Boom: 23 ft 9 in (7.25 m)
Front vandal guard
Front screen 2 in x 2 in (50.8 mm x 50.8 mm)
Front guard vertical bars
FOPS – Top cab guard

ELECTRICAL

Electronic Systems Monitor
Horn, dual

HYDRAULICS

ISO pattern pilot controls
4 Position mode selector: H, S, F & Auto
Auto Power Boost
2 Variable flow piston pumps
Auxiliary attachment mode
Auto pump destroke
Auxiliary hydraulic valve
Boom and arm anti-drift valves
Selectable cushion control for boom and arm
Controlled free swing
Ultra Clean filtration system
Boom priority

HYDRAULICS

Auxiliary hydraulics
Single acting, one pump
Double acting, single or dual pump
(includes heavy-duty bucket linkage)
Double acting general purpose for use with
thumb kit
Control pattern selector valve

UNDERCARRIAGE

Shoes: 29.5 in (750 mm) 2-bar, 51 per side
Track length: 20 ft 10 in (6.36 m)
Track gauge: 11 ft 11 in (3.64 m)
Sealed and lubed track

TRACK DRIVE

2-speed hydrostatic travel
Straight tracking travel priority
Disc-type parking brakes

UPPERSTRUCTURE

Boom: 27 ft 7 in (8.40 m) one piece
Free swing control
Hammer adaptable, no reinforcing required
Swing brake

OTHER

Counterweight: 27,668 lb (12 561 kg)
Single key lockup

OTHER

Load holding control devices, cylinder mounted
Case/JRB Slide-Loc® Hydraulic Coupler
Counterweight removal device
Full length track guards

BUCKETS

Application	Width	SAE Heaped Capacity
Heavy-duty	42 in thru 84 in (1.06 m thru 2.13 m)	2.53 yd ³ thru 5.91 yd ³ (1.93 m ³ thru 4.52 m ³)
Extreme-duty	45 in thru 84 in (1.14 m thru 2.13 m)	2.47 yd ³ thru 5.30 yd ³ (1.89 m ³ thru 4.05 m ³)

NOTE: All specifications are stated in accordance with SAE Standards or Recommended Practices, where applicable.

NOTE: All engines meet current EPA emissions requirements.

IMPORTANT: CNH America LLC reserves the right to change these specifications without notice and without incurring any obligation relating to such change. CNH America LLC does not warrant the safety or reliability of attachments from other manufacturers.

Case is a registered trademark of CNH America LLC. Any trademarks referred to herein, in association with goods and/or services of companies other than CNH America LLC, are the property of those respective companies.



www.casece.com